

MSA Latchways® Vertical Ladder System Kits



Vertical
ladder system



Vertical ladder
system with
extension post



WE KNOW WHAT'S AT STAKE.

MSA Latchways Vertical Ladder Kits

Kit Overview

MSA Latchways Vertical Ladder System Kits provide an easy-to-install solution when fall protection is necessary for climbing activities on fixed ladders. A vertical lifeline allows movement up and down the entire height of the line, eliminating the need to disconnect and find new tie-off points while ascending or descending a ladder. In the event of a fall, the climbing device automatically engages the vertical lifeline and locks, arresting the fall and potentially saving a life.

These vertical ladder kits come in multiple lengths for different ladder heights, can be adapted to various rung shapes and sizes and must be used in conjunction with an approved climbing device like the LadderLatch™.

The LadderLatch climbing device is a device for use on the MSA Latchways vertical systems with energy absorber. It incorporates the unique starwheel, allowing the unit to pass over cable supports without the need to detach. It also includes an anti-inversion mechanism so the device cannot be connected to the cable upside down.

The Latchways LadderLatch is **SOLD SEPARATELY** (see page 4).

Extension Posts are necessary for ladders where the top rung does not give the necessary clearance required to step on to the surface area. The user will need additional height for the fixed ladder in order to step onto the surface area and detach properly.

Approvals

- EN 353-1:2018
- ANSI Z359.1
- CSA Z259.2.5
- Meets OSHA 1910.28
– Walking/Working Surfaces Standard

Ordering Information

Vertical Ladder Kit		
Part Number	L1	L2
30923-00	3m (10')	3m (10')
30924-00	6m (20')	6m (20')
30925-00	12m (40')	12m (40')
30906-00	19m (60')	19m (60')
30907-00	25m (80')	25m (80')
30908-00	31m (100')	31m (100')
30909-00	37m (120')	37m (120')
30910-00	43m (140')	43m (140')
30911-00	49m (160')	49m (160')
30912-00	55m (180')	55m (180')

Vertical Ladder Kit (with extension post)		
Part Number	L1	L2
30913-00	3m (10')	5m (15.6')
30914-00	6m (20')	9m (25.6')
30915-00	12m (40')	15m (45.6')
30916-00	19m (60')	21m (65.6')
30917-00	25m (80')	27m (85.6')
30918-00	31m (100')	33m (105.6')
30919-00	37m (120')	39m (125.6')
30920-00	43m (140')	45m (145.6')
30921-00	49m (160')	51m (165.6')
30922-00	55m (180')	57m (185.6')

Attachment device (sold separately)

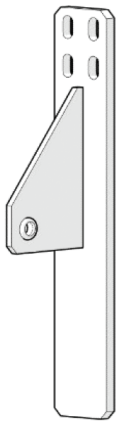
Latchways attachment devices are designed to connect the user, wearing a full body harness, to a Latchways cable system. These devices allow hands-free operation for system users. The unique starwheel allows the device to pass over cable supports without the need to detach.

LadderLatch device	
Part Number	Conformance
3100L-00T	EN 353-1:2018
3103L-00	CSA – Z259.2.5-12
3104L-00	ANSI – Z359.16-2016

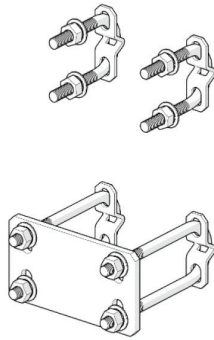


Only approved climbing devices like the LadderLatch™ can be used with the MSA Latchways Vertical Ladder System Kits.

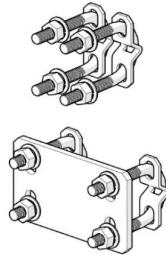
Kit Components



Galvanised Top Anchor



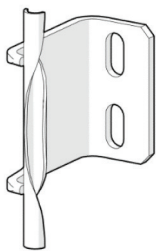
Extension Post Fixing Kit



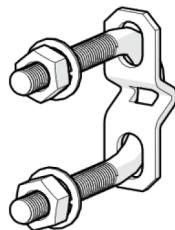
Top Anchor Fixing Kit



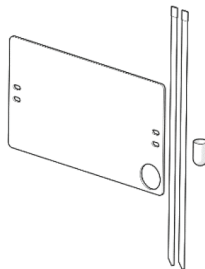
Energy Absorber Lifeline Assembly



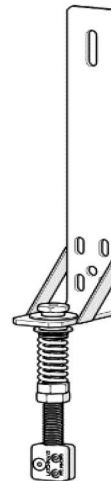
Ladder Mount
Intermediate Cable Guide



Cable Guide Fixing Kit



System Label Kit

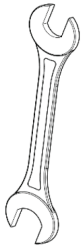


Bottom Anchor Assembly



Galvanised extension post

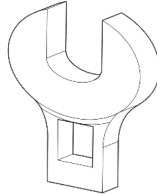
Tools Required



x1 (19mm)



x2 Max (30mm)



x1 (17mm)



x1 (10Nm-60Nm)



x1 (5mm)



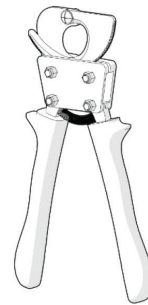
x1 (17mm)



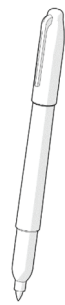
x1 (19mm)



x1



x1



x1

Note: This Bulletin contains only a general description of the products shown. While product uses and performance capabilities are generally described, the products shall not, under any circumstances, be used by untrained or unqualified individuals. The products shall not be used until the product instructions/user manual, which contains detailed information concerning the proper use and care of the products, including any warnings or cautions, have been thoroughly read and understood. Specifications are subject to change without prior notice.

MSA operates in over 40 countries worldwide. To find an MSA office near you, please visit [MSAafety.com/offices](https://www.MSAafety.com/offices).