

Operating Manual

M1 LGDV

Positive Pressure Lung Governed Demand Valve



Order No.: 10190261/00



The Safety Company

Schlüsselstrasse 12
8645 Rapperswil-Jona
Switzerland

Contents

1	Safety Regulations	4
1.1	Correct Use	4
1.2	Liability Information	4
1.3	Series	5
2	Description	6
2.1	Overview	6
2.2	Marking	6
3	Use	7
3.1	Preparing the Device	7
3.2	Connecting the Device	7
3.3	Putting the Device into Operation	7
3.4	Switching off the Device	7
3.5	Removing the Device from Mask	7
3.6	Removing the Device from SCBA	8
3.7	Bypass System (only for M1-AS-B LGDV)	8
4	Maintenance	9
4.1	Maintenance Instructions	9
4.2	Maintenance Intervals	9
4.3	Storage	9
4.4	Malfunction	9
5	Technical Data / Approvals	10
6	Approved System Components	10
7	Ordering Information	11
7.1	Positive Pressure Lung Governed Demand Valves	11
7.2	Accessories	11

1 Safety Regulations

1.1 Correct Use

The M1 LGDV, in this manual also referred to as device, is a lung governed demand valve for a Compressed Air Breathing Apparatus or Compressed Airline Breathing Apparatus. It is connected between compressed air supply and full face mask and controls the inhaled air.

The M1 lung governed demand valve series is only permitted for specific system components (exact allocation see chapter 6).

WARNING!

The device is not an independent breathing apparatus. It must be used exclusively mounted on a full face mask and an SCBA / CABA.

The device is not suitable for underwater diving.

It is imperative that this operating manual be read and observed when using the device. In particular, the safety instructions, as well as the information for the use and operation of the device, must be carefully read and observed. Furthermore, the national regulations applicable in the user's country must be taken into account for a safe use.

WARNING!

This product is supporting life and health. Inappropriate use, maintenance or servicing may affect the function of the device and thereby seriously compromise the user's life.

Before use, the product operability must be verified. The product must not be used if the function test is unsuccessful, it is damaged, a competent servicing/maintenance has not been made, genuine MSA spare parts have not been used.

Alternative use, or use outside this specification will be considered as non-compliance. This also applies especially to unauthorised alterations to the product and to commissioning work that has not been carried out by MSA or authorised persons.

1.2 Liability Information

MSA accepts no liability in cases where the device has been used inappropriately or not as intended. The selection and use of the device are the exclusive responsibility of the individual operator.

Product liability claims, warranties and guarantees made by MSA with respect to the device are voided, if it is not used, serviced or maintained in accordance with the instructions in this manual.

1.3 Series

This manual applies to the following lung governed demand valves from the M1 LGDV series:

AS (push to connect / quick connect)

- M1-AS LGDV, short
- M1-AS LGDV, long
- M1-AS LGDV, fix

M45x3 (threaded version)

- M1-AE LGDV M45x3, short
- M1-AE LGDV M45x3, long
- M1-AE LGDV M45x3, fix

ESA (push to connect / quick connect according to DIN 58600)

- M1-ESA LGDV, short
- M1-ESA LGDV, long

AS-B (push to connect / quick connect with Bypass)

- M1-AS-B LGDV, short
- M1-AS-B LGDV, long

Explanations on model designation

AS:	Positive pressure, plug-in connection, suitable for full face masks PS-MaXX
AE:	Positive pressure, thread connection M45x3 according to DIN EN 148-3, suitable for full face masks -PF
ESA:	Positive pressure, plug-in connection according to DIN 58600, suitable for full face masks ESA
AS-B:	Positive pressure, bypass for constant air flow

2 Description

2.1 Overview

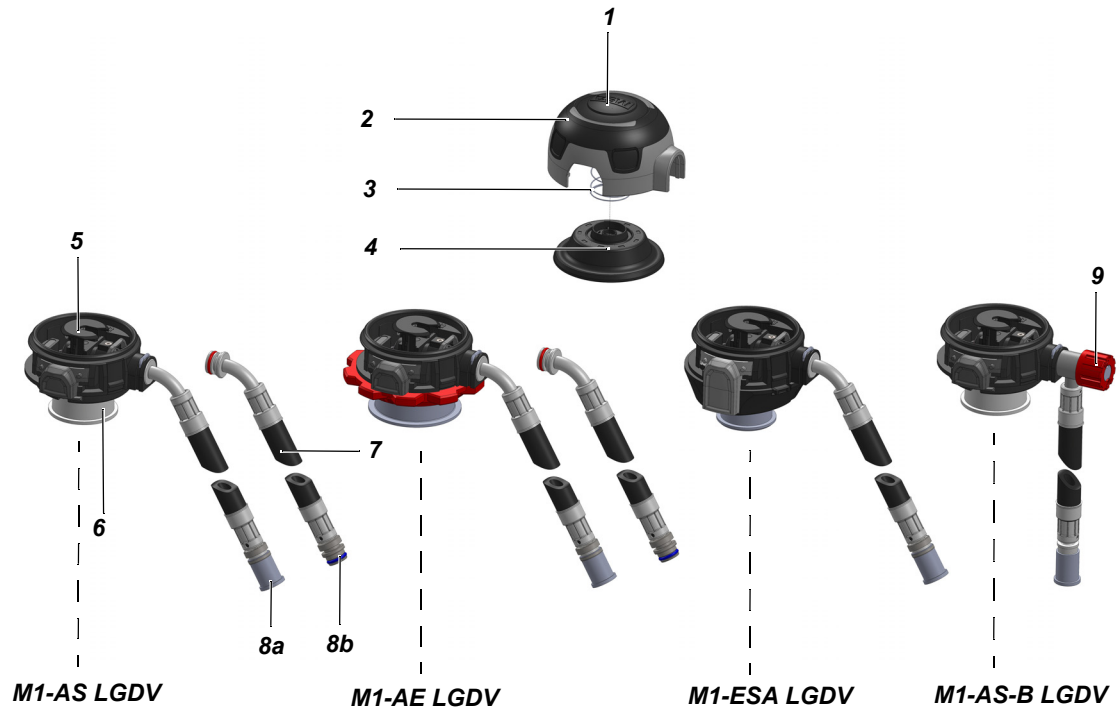


Fig. 1 Exploded view of all versions

- | | | | |
|---|------------------------------------|----|-----------------------------------|
| 1 | Flush button | 6 | Dust cap |
| 2 | Cover | 7 | Medium pressure hose |
| 3 | Positive pressure spring | 8a | Short / long version for coupling |
| 4 | Diaphragm | 8b | Fixed version |
| 5 | Valve assembly (inclusive housing) | 9 | Bypass |

2.2 Marking

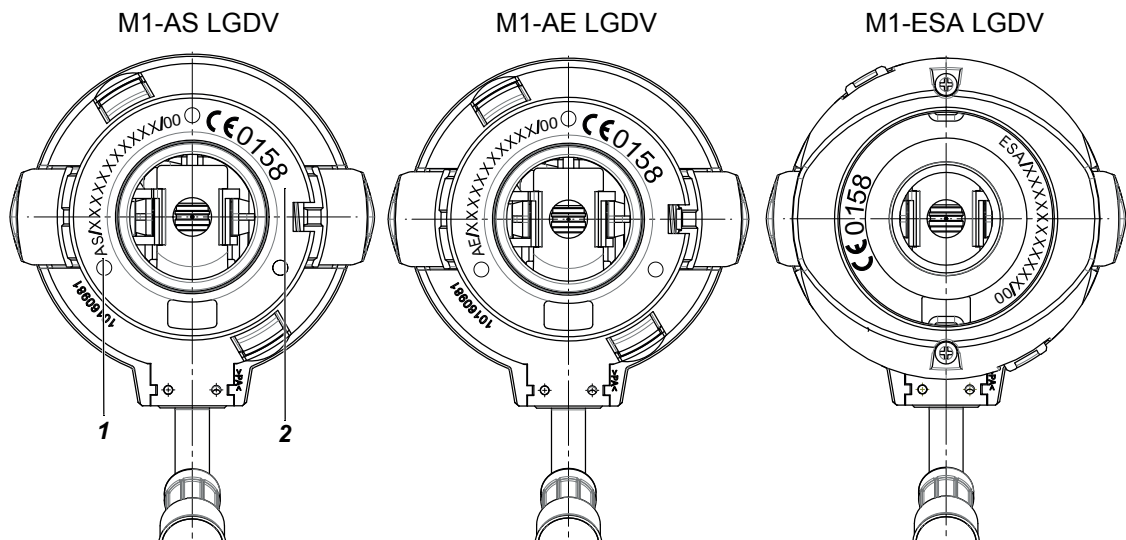


Fig. 2 Marking

- | | |
|---|---|
| 1 | Type / Part number |
| 2 | CE-marking with notified body number (DEKRA EXAM, Zertifizierungsstelle Dinnendahlstr. 9, 44809 Bochum) |

3 Use

3.1 Preparing the Device

WARNING!

The lung governed demand valve may only be put into use in a fully maintained and tested condition. If malfunctions or defects are noticed prior to use, do not use the lung governed demand valve under any circumstances. Failure to follow this warning can result in serious personal injury or death.

Get the apparatus checked and repaired by an authorised service centre.

Switching off the Device

Before connecting the device to medium pressure, in order to prevent accidental air delivery, push the red operating button to switch off the device.

3.2 Connecting the Device

- (1) Insert plug-in nipple of the device into the coupling of the medium pressure hose of an approved SCBA until it distinctly snaps into place (not for fixed LGDV).
- (2) Don full face mask and perform tightness check according to the mask operating manual.
- (3) Open cylinder valve(s) fully.
- (4) Screw the device into the mask (M1-AE) or insert it into the adapter of the mask until it distinctly snaps into place (M1-AS, M1-AS-B, M1-ESA).

Support during Donning

MSA recommends that the device must be attached to the mask and the connection inspected by a second person.

3.3 Putting the Device into Operation

To activate the device, inhale once forcefully or push the flush button.

WARNING!

When using the flush button, the compressed air consumption increases.



In case of an emergency, push the flush button to flush out smoke and gases from the mask.

3.4 Switching off the Device

To switch off the device, push red operating button until stopper.

3.5 Removing the Device from Mask

For M1-AE:

- (1) Switch off the device by pushing the red operating button.
- (2) Unscrew handwheel and separate device from the mask.

For M1-AS, M1-AS-B and M1-ESA:

- (1) Press both operating buttons simultaneously.
- (2) Separate the device from the mask.

3.6 Removing the Device from SCBA

- (1) If necessary, uncouple medium pressure hose (not for fixed LGDV):
Push the plug-in nipple into the coupling of the medium pressure hose forcefully and pull back the coupling sleeve at the same time.

3.7 Bypass System (only for M1-AS-B LGDV)

A bypass system is available for the M1-AS-B LGDV.

It is a safety system that supplies the user with continuously flowing air independent of the lung governed demand valve. By turning the red handwheel, the bypass is opened and can be set individually.



WARNING!

When using the bypass, the compressed air consumption increases.

4 Maintenance

4.1 Maintenance Instructions

The product should be regularly checked and serviced by specialists. Inspection and service records must be maintained. Always use original parts from MSA.

Repairs and maintenance must be carried out by authorised service centres or by MSA. Changes to devices or components are not permitted and could result in loss of approved status.

Rubber parts are subject to aging and must be inspected and replaced at regular intervals.

4.2 Maintenance Intervals



MSA recommends the following maintenance intervals. If necessary and considering the usage, intervals may be shorter than indicated.

Observe national laws and regulations!

In case of doubt, ask your local MSA contact person.

Component	Work to be performed	After use	Annually	Every 3 years	Every 10 years ¹⁾
M1 LGDV	Cleaning	X		X	
	Disinfection	X			
	Sight, function and tightness test	X ²⁾	X		
	Diaphragm replacement			X	
	Overhaul				X

1) For compressed air breathing apparatus that are frequently used, MSA recommends a complete overhaul after approx. 540 hours. (This corresponds to 1080 uses with a usage duration of 30 minutes.)

2) Visual test of diaphragm only after use in aggressive media or under extreme conditions like i. e. excessive heat; function and tightness test always.

4.3 Storage

Always store positive pressure lung governed demand valves when switched off. To do this, push the red operating button.

Store the device with protective cap attached (see chapter 7). The storage should be in a clean and dry condition at normal climate free of hazards, protected against direct sunlight and heat. The storage room must be cool, dry, dust-free and moderately ventilated.



The optimal storage temperature is between +15 °C and 25 °C. The optimal relative humidity is below 65 %.

4.4 Malfunction

In case of malfunctions, the device must be inspected and if necessary repaired by MSA or trained service personnel.

5 Technical Data / Approvals

Operating pressure	: 4 - 9 bar dynamic
Operating temperature	: -40 °C to 60 °C
Operating gas	: Breathing air according to EN12021 or better
Max. flow bypass (AS-B)	: 650 l/min
Transponder	: Amplitude modulation: 13.56 MHz, 1024 bit, IP 68 Temperature range: -40 °C up to +70 °C

Approvals	The device complies with the Regulation (EU) 2016/425.
	0158
EN 137	Lung governed demand valves of the M1 LGDV series are approved as components of a compressed air breathing apparatus according to chapter 6 in compliance with EN 137.
DEKRA	DEKRA EXAM GmbH, Dinnendahlstr. 9, 44809 Bochum, Germany, Notified Body number: 0158
	II 1G IIC II 1D IIIC

6 Approved System Components

Compressed air breathing apparatus - Series

M1 ATO

Full face mask - Series

3S

Ultra Elite

G1

ATO = Assemble To Order

7 Ordering Information

7.1 Positive Pressure Lung Governed Demand Valves

Description	ATO Code
M1-AS LGDV, short	LO-BN-CNN-DN-EN-FN-GN-HN-IN-JN-KN- L1 -MN-NN-ON-PN
M1-AS LGDV, long	LO-BN-CNN-DN-EN-FN-GN-HN-IN-JN-KN- L2 -MN-NN-ON-PN
M1-AS LGDV, fix	LO-BN-CNN-DN-EN-FN-GN-HN-IN-JN-KN- L3 -MN-NN-ON-PN
M1-AE LGDV M45x3, short	LO-BN-CNN-DN-EN-FN-GN-HN-IN-JN-KN- L4 -MN-NN-ON-PN
M1-AE LGDV M45x3, long	LO-BN-CNN-DN-EN-FN-GN-HN-IN-JN-KN- L5 -MN-NN-ON-PN
M1-AE LGDV M45x3, fix	LO-BN-CNN-DN-EN-FN-GN-HN-IN-JN-KN- L6 -MN-NN-ON-PN
M1-ESA LGDV, short	LO-BN-CNN-DN-EN-FN-GN-HN-IN-JN-KN- L7 -MN-NN-ON-PN
M1-ESA LGDV, long	LO-BN-CNN-DN-EN-FN-GN-HN-IN-JN-KN- L8 -MN-NN-ON-PN
M1-AS-B LGDV, short	LO-BN-CNN-DN-EN-FN-GN-HN-IN-JN-KN- L9 -MN-NN-ON-PN
M1-AS-B LGDV, long	LO-BN-CNN-DN-EN-FN-GN-HN-IN-JN-KN- L0 -MN-NN-ON-PN

7.2 Accessories

Description	Part number
Seal cap (protective sleeve for plug-in nipple) (pack of 10)	D4080871
Dust cap for AS series	10027738
Dust cap for AE series	D0012961
Dust cap for ESA series	10039000

For local MSA contacts, please visit us at [MSAafety.com](https://www.MSAafety.com)

*Because every life has a **purpose...***