

Operating Manual

3S-H Mask – Positive Pressure

Mask/Helmet Combination 3S-H/F1



Order No. 10110542/02

MSA AUER GmbH
Thiemannstrasse 1
D-12059 Berlin

Germany

© MSA AUER GmbH. All rights reserved

Contents

1	Safety Regulations	5
1.1	Correct Use	5
1.2	Liability Information	6
2	Description	7
2.1	Mask Versions	8
2.2	Marking/Certification	8
3	Use	11
3.1	Putting on the Helmet	11
3.2	Donning the Mask	12
3.3	Leak Test	13
3.4	Removing the Mask	13
4	Cleaning, Disinfection	14
4.1	Cleaning/Disinfection the Helmet	14
4.2	Cleaning/Disinfection with a Washing Machine	14
4.3	Cleaning/Disinfection with an Ultrasonic Cleaner	14
4.4	Cleaning by Hand	15
4.5	Disinfection by Hand	15
5	Maintenance	15
5.1	Maintenance Instructions	15
5.2	Maintenance Intervals	16
5.3	Maintenance of the Exhalation Valve	17
5.4	Replacing the Speech Diaphragm	17
5.5	Tightness Test of the Mask	18
5.6	Visual Test and Function Test	18
5.7	Helmet Maintenance	18
6	Safekeeping and Storage	19

7	Ordering Information	19
7.1	Exploded View	19
7.2	Mask	21
7.3	Accessories	21
7.4	Replacement parts	22
8	Applicable Helmets	23
8.1	MSA Gallet F1 Helmets	23
8.2	MSA Gallet F2 X-TREM Helmets	25

1 Safety Regulations

1.1 Correct Use

The mask/helmet combination series 3S-H/F1 with positive pressure connection according to EN 148-3 or special manufacturer type are not complete respiratory protective devices by themselves, but serve as facepieces in accordance with DIN 58610 [EN 443 and EN 136 CL3+ with the exception of selection 7.11] for use with respiratory filters, compressed air breathing apparatus, fresh air hose breathing apparatus and compressed air line breathing apparatus.

The masks can only be used in conjunction with following MSA GALLET helmets:

- F1SF [EN 443:2008] - Gallet F1 XF [EN 443:2008]
- F1E [EN 443:2008]

The instructions for use for the helmets have to be regarded.

The mask/helmet combination series 3S-H/F2 X-TREM with positive pressure connection according to EN 148-3 or special manufacturer type are not complete respiratory protective devices by themselves, but serve as facepieces in accordance with DIN 58610 [EN 136 CL3+ with the exception of selection 7.11].



Attention!

The helmet type F2 X-TREM is not certificated according to EN 443. Therefore this helmet in combination with the mask must not be used for firefighting in buildings and structures.

The mask/helmet combination provides the function of head protection and respiratory protection in one system.



Attention!

According to the European directive 89/656/EWG it has to be verified before first use of the mask that a correct size has been chosen [proper tight fit], that the mask can be worn in combination with other protective equipment [for example a protective jacket], that it is a correct choice for the conditions at the particular place of use and that it fulfils the ergonomic requirements.

It is imperative that this operating manual be read and observed when using the product. In particular, the safety instructions, as well as the information for the use and operation of the product, must be carefully read and observed. Furthermore, the national regulations applicable in the user's country must be taken into account for a safe use.

**Danger!**

This product is supporting life and health. Inappropriate use, maintenance or servicing may affect the function of the device and thereby seriously compromise the user's life.

Before use the product operability must be verified. The product must not be used if the function test is unsuccessful, it is damaged, a competent servicing/maintenance has not been made, genuine MSA spare parts have not been used.

Alternative use, or use outside this specification will be considered as non-compliance. This also applies especially to unauthorised alterations to the product and to commissioning work that has not been carried out by MSA or authorised persons.

1.2 Liability Information

MSA accepts no liability in cases where the product has been used inappropriately or not as intended. The selection and use of the product are the exclusive responsibility of the individual operator.

Product liability claims, warranties also as guarantees made by MSA with respect to the product are voided, if it is not used, serviced or maintained in accordance with the instructions in this manual.

2 Description

The face blank is made of a special soft rubber compound and assures a snug, comfortable fit and a tight seal. Some versions of the mask are also available in small size.

The inhalation air flows from the connector of the mask past the inhalation valve to the inside of the lens [thus keeping the lens largely fog-free] and then through the check valves into the nose cup.

The exhalation air passes through the exhalation valve directly to the ambient air.



Fig. 1 Overview mask/helmet combination

- | | | | |
|---|---------------------|---|--|
| 1 | <i>Helmet Visor</i> | 4 | <i>Adapter with tightening strap</i> |
| 2 | <i>Helmet</i> | 5 | <i>Connector with inhalation valve</i> |
| 3 | <i>Lens</i> | 6 | <i>Exhalation valve</i> |

2.1 Mask Versions

Standard Thread Connector M45 x 3

- 3S-H-PF - Standard version with polycarbonate lens
- 3S-H-PF small - as standard version, small size
- 3S-H-PF-Vg - as standard version, with Triplex [laminated] glass

MSA Plug-in Connector

- 3S-H-PS - Standard version with polycarbonate lens
- 3S-H-PS small - as standard version, small size
- 3S-H-PS-Vg - as standard version, with Triplex [laminated] glass

AutoMaXX Plug-in Connector

- 3S-H-PS-MaXX - Standard version with polycarbonate lens
- 3S-H-PS-MaXX small - as standard version, small size

ESA Plug-in Connector

- 3S-H-PF-ESA-F1 - Standard version with polycarbonate lens
- 3S-H-PF-ESA-F1 small - as standard version, small size
- 3S-H-PF-ESA-Vg-F1 - as standard version, with Triplex [laminated] glass

2.2 Marking/Certification

Marking

The mask is marked on the outer face blank as shown in Fig. 2:



Fig. 2 Marking of mask body

- 1 Mask Version
- 2 Part Number
- 3 Marking [date code, serial number]
- 4 CE-marking with notified body number
[DEKRA EXAM, Zertifizierungsstelle Dinnendahlstr. 9, 44809 Bochum]
- 5 X: ATEX classification A, B or C according to the Lens typ.
- 6 EN standard, class

Certification**Mask with Lenses from Polycarbonate**

The masks according to chapter 2.1

comply with the following directives, standards or standardised documents:

Directive 94/9/EC [ATEX] : BVS 05 ATEX H 027 X



for masks

I M1

II 1 G IIA T6 $-40\text{ °C} \leq T_a \leq +60\text{ °C}$

II 1 D



I M1

II 1 G IIB T6 $-40\text{ °C} \leq T_a \leq +60\text{ °C}$

II 1 D



for helmets F1SF and F1E:

I M1

II 1 G IIA T6 $-40\text{ °C} \leq T_a \leq +60\text{ °C}$

II 1 D

in the helmet colours orange or fluorescent, with front plate fluorescent, orange, white, blue, yellow, red or black



The mask/helmet combination with F2 X-TREM helmets are not tested for use in explosive atmospheres.

Directive 89/686/EC [PPE] :

for masks

EN 136 CL3+

with the exception of Section 7.11

for mask/helmet combinations

DIN 58610:2006

for helmets

see operating manual helmet



0158

Mask with Lenses from Triplex [laminated] Glass

The masks according to chapter 2.1

comply with the following directives, standards or standardised documents:

Directive 94/9/EC [ATEX] : BVS 05 ATEX H 027 X



for masks

I M1

II 1 G IIA T6 $-40\text{ °C} \leq T_a \leq +60\text{ °C}$

II 1 D



I M1

II 1 G IIB T6 $-40\text{ °C} \leq T_a \leq +60\text{ °C}$

II 1 D



I M1

II 1 G IIC T6 $-40\text{ °C} \leq T_a \leq +60\text{ °C}$

II 1 D



for helmets F1SF and F1E:

I M1

II 1 G IIA T6 $-40\text{ °C} \leq T_a \leq +60\text{ °C}$

II 1 D

in the helmet colours orange or fluorescent, with front plate fluorescent, orange, white, blue, yellow, red or black



The mask/helmet combination with F2 X-TREM helmets are not tested for use in explosive atmospheres.

Directive 89/686/EC [PPE] :

for masks

EN 136 CL3+

with the exception of Section 7.11

for mask/helmet combinations

DIN 58610:2006

for helmets

see operating manual helmet



0158

3 Use

The mask is either carried using the harness in front of the chest or in the mask container.

**Attention!**

Ensure that the top of the mask seal **only** lies on the user's forehead. Hair should not be between the mask's seal and the user's skin.

The mask could otherwise leak. This danger also exists for instance for mask wearers with beards or deep scars in the sealing area.

**Attention!**

The tightness of the mask/helmet combination depends on the correct size of the helmet, the adjustment of the adapter with tightening strap [if possible] and the helmet's inner shell.

It is necessary to adjust the helmet's inner shell accurately to your head size.

If the helmet or the inner shell do not fit your head properly, or if the wrong mask size is chosen, there is a risk of leakage.

3.1 Putting on the Helmet



- (1) Select a helmet suitable for the user's head size.
- (2) Adjust the helmet according to the helmet's operating manual.
- (3) Grip the helmet with both hands with the chinstrap open.
- (4) Pull the helmet from the forehead over the head.
- (5) Close and slightly tighten the chin strap.

3.2 Donning the Mask



Attention!

In order to guarantee a proper fit for those wearing glasses, the 3S-H Mask spectacle kit **must** be worn since ordinary glasses **cannot** be worn under the mask.



When fitting the mask in position the chin strap of the helmet must be loose. Remove chin piece if necessary.



- (1) Push helmet backwards onto neck so that the forehead area is not covered.
- (2) Open buckles and pull tightening straps on the belt tongues until the grip tabs of the tightening straps reach the stop [longest setting].
- (3) Attach the helmet adapter to the slots on both sides of the helmet.



- (4) Draw pulling tabs of tightening straps on both sides of the helmet until the mask fits onto the face.
- (5) Push the helmet forward again until fitting comfortably.
- (6) Tighten chin straps and fix their end with Velcro fastener.
- (7) Ensure that the fit of the respiratory mask is checked by a second person.



Attention!

The chin strap must fit tightly under the chin.
If necessary, remove chin protector.

3.3 Leak Test

In order to check the facepiece-to-face tightness a leak test must be performed before each use.



- (1) Seal the mask connector or the inlet opening side of an attached filter with the ball of your hand.
- (2) Test tightness by inhaling and exhaling. Whilst doing so:
 - ▷ when inhaling there must be negative pressure, no inflowing air should be noticeable.
- (3) If necessary retighten the straps, or try a mask of a different size.

If the leak test fails the mask must not be used.

3.4 Removing the Mask



- (1) Open buckles on the adapters.
- (2) Pull mask until stopped by the straps.
- (3) Lift both hooks of the helmet adapter to the side and pull them back out of the helmet slots.
- (4) Remove the mask to the front.



Do not grip the mask by the exhalation valve!

- (5) Remove the helmet.

4 Cleaning, Disinfection

The cleaning and disinfection of the masks is performed in accordance with the cleaning intervals → chapter 5.2.

There are three possible kinds of cleaning:

- Using a washing machine
- Using an ultrasonic cleaner
- Cleaning by hand.



Attention!

Do not use cleaning products containing hydrocarbons or solvents [e.g. nitro-thinner].

Cleaned parts must not be dried in radiant heat [sun, radiators].

When using a drying cabinet, the temperature must not exceed +60°C.

Perform a tightness test after every cleaning, disinfection and maintenance or after every exchange of parts.

4.1 Cleaning/Disinfection the Helmet

- Clean and disinfect the helmet according the helmet operating manual.

4.2 Cleaning/Disinfection with a Washing Machine



Follow the washing agent's user instructions on this CD/DVD.

- After cleaning check the two screws for the lens ring. Retighten the screws hand-tight if necessary.

4.3 Cleaning/Disinfection with an Ultrasonic Cleaner



When cleaning/disinfecting with an ultrasonic cleaner please follow the cleaning agent's user instructions on this CD/DVD.

4.4 Cleaning by Hand

- (1) Remove inhalation and exhalation valve discs.
- (2) Unbutton the nose cup.
- (3) Unscrew the speaking diaphragm with the special tool.
- (4) Clean mask using lukewarm water and mild cleaning agent EW 80 and thoroughly rinse in running water.
- (5) Disinfect the mask after cleaning. Removed components must be separately cleaned and disinfected.
- (6) Dry mask and components and reassemble mask in reverse order.
- (7) Perform a tightness test [→ chapter 5.5].

4.5 Disinfection by Hand



Clean the mask before disinfecting.

Use a disinfectant according to the user instructions on this CD/DVD.

- (1) Disassemble and clean the mask [→ chapter 4.4].
- (2) Disinfect the mask using recommended disinfectant. Please observe the user instruction for the disinfectant.
- (3) Thoroughly rinse mask in running water.
- (4) Dry mask and components and reassemble mask in reverse order.
- (5) Perform a tightness test [→ chapter 5.5].

5 Maintenance

5.1 Maintenance Instructions

This product should be regularly checked and serviced by trained specialists. Inspection and service records must be maintained. Always use original parts from MSA.

Repairs and maintenance must be carried out only by authorised service centres or by MSA. Changes to devices or components are not permitted and will result in loss of approval.

MSA is liable only for maintenance and repairs carried out by MSA.



MSA recommends the following maintenance intervals. If necessary considering the usage, tasks may be at even shorter intervals than indicated.

Observe national laws and regulations!

If in any doubt, ask your local MSA contact person.

5.2 Maintenance Intervals

Devices	Work to be Performed	Maximal Intervals					
		Before use	After Use	6-monthly	Two years	Four years	Six years
helmet	See helmet operating manual.						
masks	Cleaning and Disinfection ^{*)}		X		X ^{*)}		
mask/ helmet combina- tion	Visual, Functional and Tightness Check ^{**)}		X	X ^{**)}			
	Replacement of the exhalation valve disc					X	
	Replacement of the Speech Diaphragm						X
	Replacement of the O-ring for connector				X		X ^{***)}
	User check	X					

^{*)} For a 2-year interval cleaned and disinfected masks have to be stored airtight. Otherwise masks should be cleaned and disinfected at least semi-annually. After each cleaning and disinfection the facepiece must be checked.

^{**)} For airtightly packed face pieces, which are not exposed to increased climatic and mechanical stress [for example transport on vehicles], this interval can be extended to 2 years.

^{***)} Only applicable for PS and PS-ESA

5.3 Maintenance of the Exhalation Valve



The year of manufacture is located on the valve disc.

In case of a leak remove the exhalation valve disc and replace it with a new one as follows:

- (1) Unscrew the threaded socket from the mask inside with the special tool.
- (2) Remove the exhalation valve disc or the complete exhalation valve assembly.
- (3) Replace the defective components.
- (4) Reassemble the parts in reverse order.
- (5) Perform a tightness test [→ chapter 5.5].

5.4 Replacing the Speech Diaphragm



The year of manufacture is located on the speech diaphragm.

- (1) Unbutton the nose cup.
- (2) Unscrew the threaded socket from the mask inside with the special tool.
- (3) Remove the speech diaphragm.
- (4) Assemble the new speech diaphragm with the gasket towards the connector.
- (5) Perform a tightness test [→ chapter 5.5].

5.5 Tightness Test of the Mask



The testing of the masks for tightness is performed using an applicable MSA testing instrument in accordance with the relevant operating manual.

- (1) Fit mask tight onto the test instrument.
 - ▷ Using the test plate or test band to fix the mask [→ chapter 7.3].
- (2) Generate a negative pressure of 10 mbar.
- (3) Measure the pressure change after 1 min.
 - ▷ The mask including the exhalation valve meets the requirements if for a moistened exhalation valve and a negative pressure generated inside the mask the pressure change does not exceed 1 mbar in a minute.
 - ▷ Leaking masks must not be used.

Opening Pressure Test of the exhalation valve

The opening pressure of the exhalation valve has to be at least 4.2 mbar, otherwise the mask must not be used.

5.6 Visual Test and Function Test

Visual Test

- (1) Inspect the mask for possible damages like for example deformations, stickings or cracks. Valve discs, especially exhalation valve discs, are crucial functional elements of the mask.
- (2) Defective or damaged parts have to be replaced immediately.
- (3) For helmets: refer to the helmet operating manual.

Functional Test

After assembling the mask the mobile parts, especially the valve discs, have to be tested for unrestricted mobility.

5.7 Helmet Maintenance



For detailed information about helmet maintenance refer to the helmet operating manual.

6 Safekeeping and Storage



Attention!

In order to avoid damage to or the deformation of the masks no additional loose objects shall be kept in the mask container.

For the safekeeping of the mask the mask container should be used. This also applies to masks with installed filters, except CO and NO filters.

MSA rubber products are protected by an anti-ageing agent that can become visible as a light coating. This coating is harmless and can be removed.

To ensure a long life of rubber components, following ISO 2230 by storing them in a cool, dry place protected from ultraviolet radiation.

7 Ordering Information

7.1 Exploded View

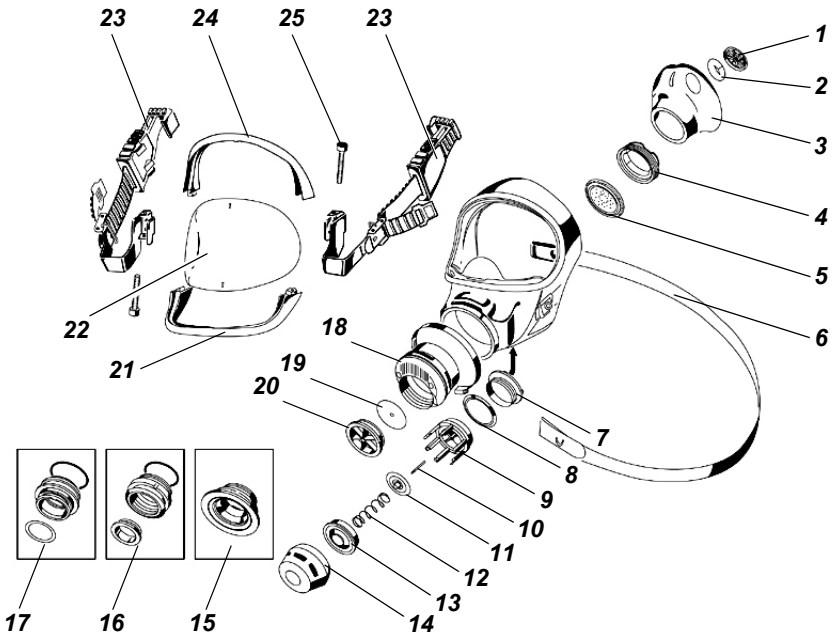


Fig. 3 Mask exploded view

1	<i>Nose cup valve seat</i>	14	<i>Protective housing</i>
2	<i>Nose cup valve disc</i>	15	<i>3S-H-MaXX series</i>
3	<i>Nose cup [without valves]</i>	16	<i>3S-H-PF and -PS series</i>
4	<i>Retainer ring</i>	17	<i>3S-H-ESA series</i>
5	<i>Speech diaphragm</i>	18	<i>Connector</i>
6	<i>Carrying strap</i>	19	<i>Inhalation valve disc</i>
7	<i>Threaded ring</i>	20	<i>Inhalation valve seat</i>
8	<i>Slide ring</i>	21	<i>Lens ring</i>
9	<i>Valve socket</i>	22	<i>Lens</i>
10	<i>Positioning pin</i>	23	<i>Adapter with tightening strap</i>
11	<i>Exhalation valve disc</i>	24	<i>Lens ring</i>
12	<i>Valve spring</i>	25	<i>Screw for lens ring</i>
13	<i>Valve cap</i>		

7.2 Mask

Description	Article No.
3S-H-PF	10042636
3S-H-PF – small	10044437
3S-H-PF-Vg	10044131
3S-H-PS	10042637
3S-H-PS – small	10044439
3S-H-PS-Vg	10044132
3S-H-PS-MaXX	10042638
3S-H-PS-MaXX – small	10044441
3S-H-PF-ESA	10042639
3S-H-PF-ESA-Vg	10044133
3S-H-PF-ESA – small	10044443

7.3 Accessories

Description	Article No.
3 S spectacles [plastic frame]	D2055954
3 S spectacles [metal frame]	D2055811
Special tool [for replacing exhalation valve and speech diaphragm]	D2055038
Cover lens, adhesive [package of 10]	D2055706
Exhalation valve closure	D5135047-SP
Mask hanger [package of 4]	D2055753
Mask tightness test kit [for more MSA testing instruments refer to www.MSAsafety.com]	D6063705
Test plate	D6125721
Test band	D6125715
Leak test adapter M45 x 3	D4074847
Leak test adapter [for quick-connect coupling]	D4074890
Disinfectant AUER 90, 2 l	D2055765
Disinfectant AUER 90, 6 l	D2055766

7.4 Replacement parts

Description	Article No.
Nose Cup, without valves [rubber]	D2055025-SP
Nose Cup, without valves [silicone]	D2055213-SP
Lens [polycarbonate, package of 10]	10080822
Lens [laminated glass]	D2055730
Lens ring, assembly	D2055746
Screw for lens ring [package of 10]	D2055996
Clamp [package of 10]	10095118
Clamp for 3S-small [package of 10]	D0013834-SP
Speech diaphragm [package of 2]	D2055708
Nose cup valve seat [package of 10]	10096173
Nose cup valve disc [package of 20]	D2055731
Threaded ring [speech diaphragm]	D2055011-SP
Inhalation valve disc [package of 20]	D2056714
Inhalation valve seat [package of 5]	D2055725
Exhalation valve, assembly:	D4080933
Protective housing	D4080396-SP
Slide ring [package of 4]	10096058
Exhalation valve disc [package of 10]	D2055749
Threaded ring [exhalation valve]	D5135041-SP
Valve socket	D4080394
Valve spring	10095813
Valve cap	D4080413
O-ring for plug-in adapter	D2056736
Guide pin [helmet]	D4080394
Carrying strap, assembly	D2055707-SP
Adapter plug-in, assembly	D2056727
Cover	D2055171
Screw for cover [package of 10]	D0012475-SP

8 Applicable Helmets

8.1 MSA Gallet F1 Helmets

Helmets	Colour of the shell
F1 SF* [EN 443:2008] F1 E* [EN 443:2008]	red*
	yellow*
	blue*
	black*
	white*
	orange*
	green luminescing*
F1 E [EN 443:2008] F1 SF [EN 443:2008]	nickel

* The mask/helmet combination with neck curtain for which all helmet components are marked with * comply with directive: vfdb-Richtlinie 0802:04

Helmets	Colour of the shell
Gallet F1 XF [EN 443:2008] size M, L	
	all colours
Neck curtain: aluminium wool (integral) nomex	
Lamp: Lamp holder (mounted, spare) Integrated light module	
Retro-reflective stickers:	Grey

8.2 MSA Gallet F2 X-TREM Helmets

Helmets	Colour of the shell
INDUSTRY [EN397] -unvented shell -no chinstrap GA3200-BA00	White
Optional: 2-point chinstrap	
WILDLAND RESCUE [EN12492] -Vented shell -3-point chinstrap GA33xx	White Blue Yellow Black Grey Orange Red Green Photoluminescent
Optional: Retro-reflective stickers (GA3230):	silver, yellow, red, blue or green

Helmets	Colour of the shell
<p>TRAFFIC RESCUE [directive 89/686/EC]</p> <p>-unvented shell</p> <p>-3 point chinstrap</p> <p>GA35xx</p>	<p>White</p> <p>Blue</p> <p>Yellow</p> <p>Black</p> <p>Orange</p> <p>Red</p> <p>Photoluminescent</p>
<p>Optional:</p> <p>Wool neck curtain (GA3240)</p>	
<p>Retro-reflective stickers (GA3230):</p> <p style="padding-left: 100px;">silver, yellow, red, blue or green</p>	

MSA in Europe

[www.MSAafety.com]

Northern Europe

Netherlands

MSA Nederland

Kernweg 20
1627 LH Hoorn
Phone +31 [229] 25 03 03
Fax +31 [229] 21 13 40
info.nl@MSAafety.com

Belgium

MSA Belgium N.V.

Duwijkstraat 17
2500 Lier
Phone +32 [3] 491 91 50
Fax +32 [3] 491 91 51
info.be@MSAafety.com

Great Britain

MSA (Britain) Limited

Lochard House
Linnet Way
Strathclyde Business Park
BELLSHILL ML4 3RA
Scotland
Phone +44 [16 98] 57 33 57
Fax +44 [16 98] 74 01 41
info.gb@MSAafety.com

Sweden

MSA NORDIC

Kopparbergsgatan 29
214 44 Malmö
Phone +46 [40] 699 07 70
Fax +46 [40] 699 07 77
info.se@MSAafety.com

MSA SORDIN

Rörläggarvägen 8
33153 Värnamo
Phone +46 [370] 69 35 50
Fax +46 [370] 69 35 55
info.se@MSAafety.com

Southern Europe

France

MSA GALLET

Zone Industrielle Sud
01400 Châtillon sur
Chalaronne
Phone +33 [474] 55 01 55
Fax +33 [474] 55 47 99
info.fr@MSAafety.com

Italy

MSA Italiana S.p.A.

Via Po 13/17
20089 Rozzano [MI]
Phone +39 [02] 89 217 1
Fax +39 [02] 82 59 228
info.it@MSAafety.com

Spain

MSA Española, S.A.U.

Narcís Monturiol, 7
Pol. Ind. del Sudoeste
08960 Sant-Just Desvern
[Barcelona]
Phone +34 [93] 372 51 62
Fax +34 [93] 372 66 57
info.es@MSAafety.com

Eastern Europe

Poland

MSA Safety Poland Sp. z o.o.

Ul. Wschodnia 5A
05-090 Raszyn k/Warszawy
Phone +48 [22] 711 50 00
Fax +48 [22] 711 50 19
info.pl@MSAafety.com

Czech republic

MSA Safety Czech s.r.o.

Argentinska 38
170 00 Praha 7
Phone +420 241440 537
Fax +420 241440 537
info.cz@MSAafety.com

Hungary

MSA Safety Hungaria

Francia út 10
1143 Budapest
Phone +36 [1] 251 34 88
Fax +36 [1] 251 46 51
info.hu@MSAafety.com

Romania

MSA Safety Romania S.R.L.

Str. Virgil Madgearu, Nr. 5
Ap. 2, Sector 1
014135 Bucuresti
Phone +40 [21] 232 62 45
Fax +40 [21] 232 87 23
info.ro@MSAafety.com

Russia

MSA Safety Russia

Походный проезд д.14.
125373 Москва
Phone +7 [495] 921 1370
Fax +7 [495] 921 1368
info.ru@MSAafety.com

Central Europe

Germany

MSA AUER GmbH

Thiemannstrasse 1
12059 Berlin
Phone +49 [30] 68 86 0
Fax +49 [30] 68 86 15 17
info.de@MSAafety.com

Austria

MSA AUER Austria Vertriebs GmbH

Modcenterstrasse 22
MGC Office 4, Top 601
1030 Wien
Phone +43 [0] 1 / 796 04 96
Fax +43 [0] 1 / 796 04 96 - 20
info.at@MSAafety.com

Switzerland

MSA Schweiz

Eichweg 6
8154 Oberglatt
Phone +41 [43] 255 89 00
Fax +41 [43] 255 99 90
info.ch@MSAafety.com

European

International Sales

[Africa, Asia, Australia, Latin
America, Middle East]

MSA Europe

Thiemannstrasse 1
12059 Berlin
Phone +49 [30] 68 86 0
Fax +49 [30] 68 86 15 58
info.de@MSAafety.com